

Datamax Printer Setup

Datamax thermal printers can be set up to print with either the Windows print driver or configured for Fast Ticket. Fast Ticket allows the printer to print tickets as much as 2-3 times faster. The limitation at this time is that the printer must be used as a local printer physically connected to the work station with either a parallel or serial cable.

Select your printer and go to that section

Section A – Install the Windows print driver for a Datamax printer.

Section B – Datamax ST-3210 - Set Properties – Windows driver

Section C – Datamax E-4203 - Set Properties – Windows driver

Section D – Fast Ticket for any Datamax model (local printer only)

Section A – Installing Windows Print Driver for Datamax Printers

Have the appropriate disk with drivers available. This will be found either in the Folio program directory or on the Datamax Accessories CD which came with the printer. If neither of these are available, the most current driver may also be downloaded from www.datamaxcorp.com If you are unfamiliar with setting up a printer or if this is a networked printer you may need to contact your network administrator for additional help.

ONE

Use **Add Printer Wizard**. This can be found in either the **Control Panel** or **Printers and Faxes**. Follow the prompts on the screen. Local printer means that it is physically connected to this workstation. Network printer means that the printer is physically connected to either another workstation or a print server.

Network Printers Only. If this is a printer that is not connected to this workstation, then the printer driver must be installed on either the print server or other workstation which is physically connected to the printer first before proceeding. Contact your network administrator for help.

TWO

Select the appropriate printer port for your connection. Both printers have parallel and serial ports. The **E-4203** printer also has a built in **USB** port. Serial is not recommended because of speed. You can still connect the **ST-3210** to a **USB** port if you purchase a **USB to Parallel** cable. Cost is less than \$25 and is available from “*Cables to Go*” or your local computer supplier.

THREE

Continue the driver installation process for the correct model of printer. Print a test page which will verify that the driver and the printer are communicating properly before going on to the next section.

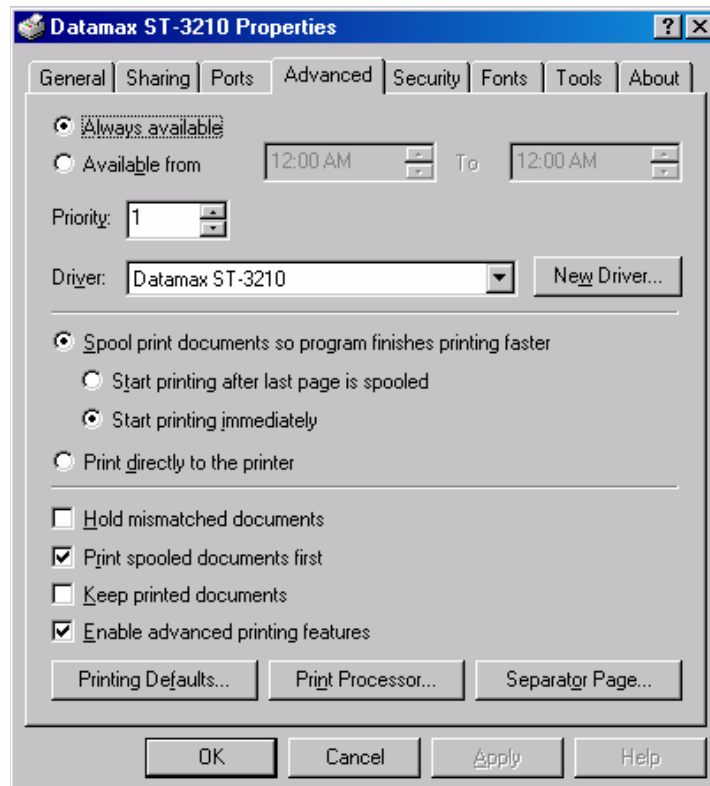
If using the Datamax Accessories CD an automatic install program will be launched. This does not install the print driver. Exit out of that program. Browse the CD for **Drivers/Seagull** and then the appropriate **inf** file for your system. Use only the Seagull drivers.

Section B – Set Properties – Datamax ST-3210 Driver

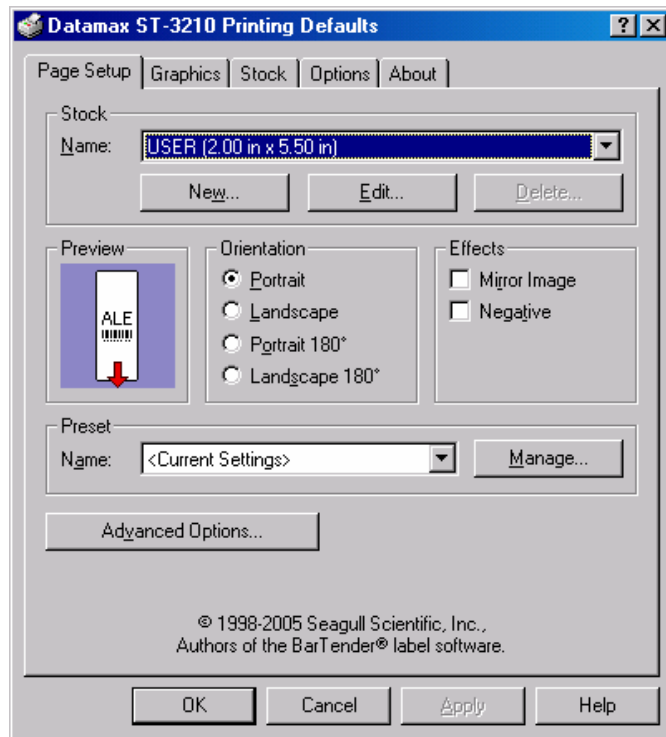
Go to **Start/Printers and Faxes**. Right click on the appropriate icon and select **Properties**.



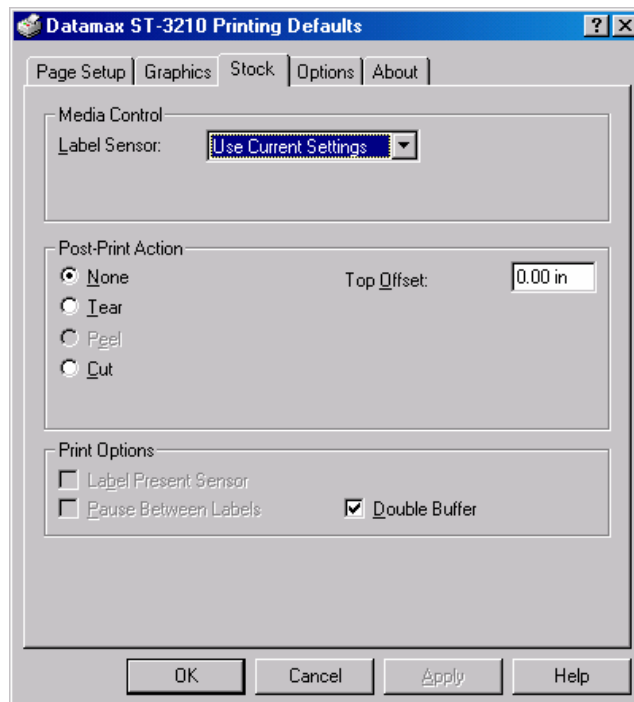
Select the **Advanced** tab.



Next, select **Printing Defaults** at the lower left of the screen.



Under **Edit**, change the **Stock** size to 2 x 5.50 inches as shown above. Click **apply** and Select the **Stock** tab.



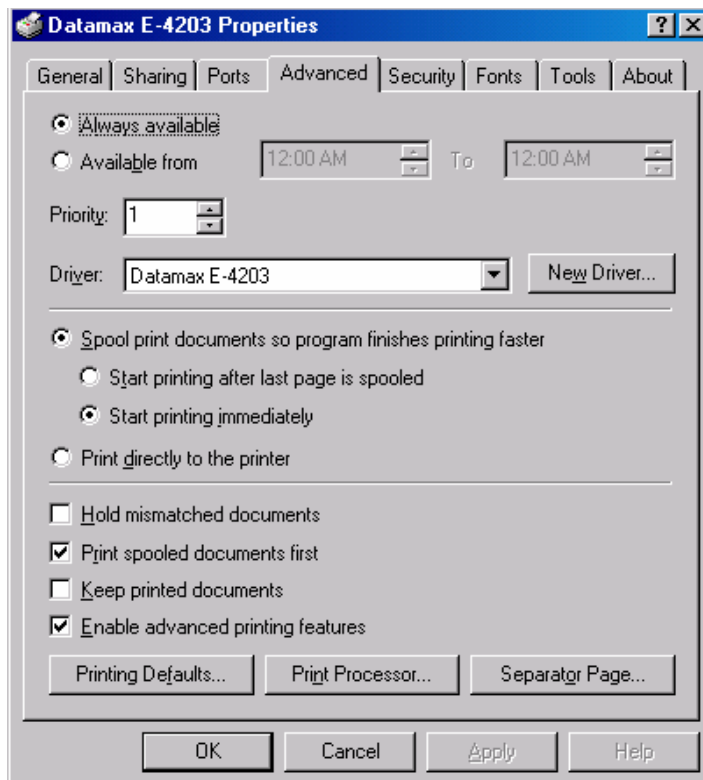
If you have the standard **ST-3210** without a cutter, **Post-Print** action should be set to **None**. If you have model **ST-3210C** which has a built-in cutter, then select **Cut**. If you select **Cut** for a printer which does not have a cutter installed, you will error out when printing tickets. Select **OK** to close this window. Choose the **General** tab and at bottom of the screen select **Printing Preferences**. You will see the same tabs appear as the screens above. Go to both the **Page Setup** and **Stock** tabs. Verify or change the settings so that they coincide with the settings above.

Section C – Set Properties – Datamax E-4203 Driver

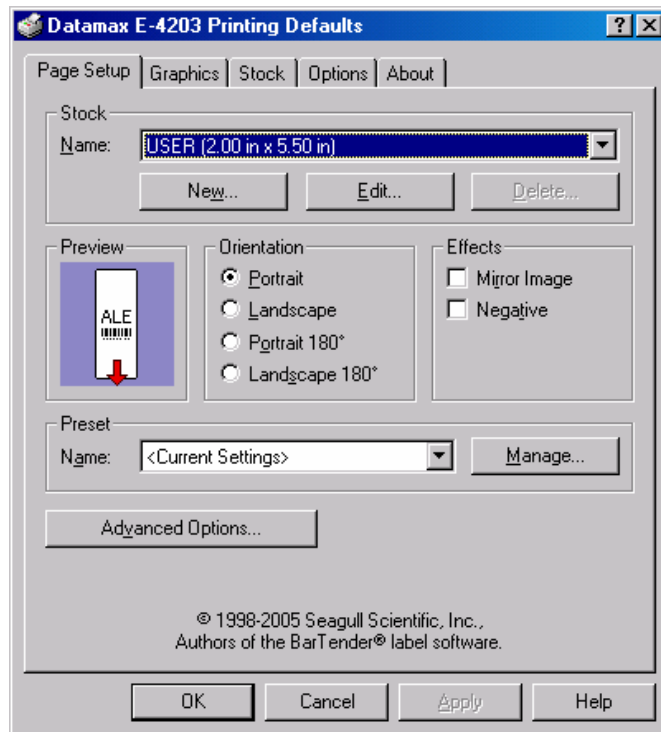
Go to Start/Printers and Faxes. Right click on the appropriate icon and select **Properties**.



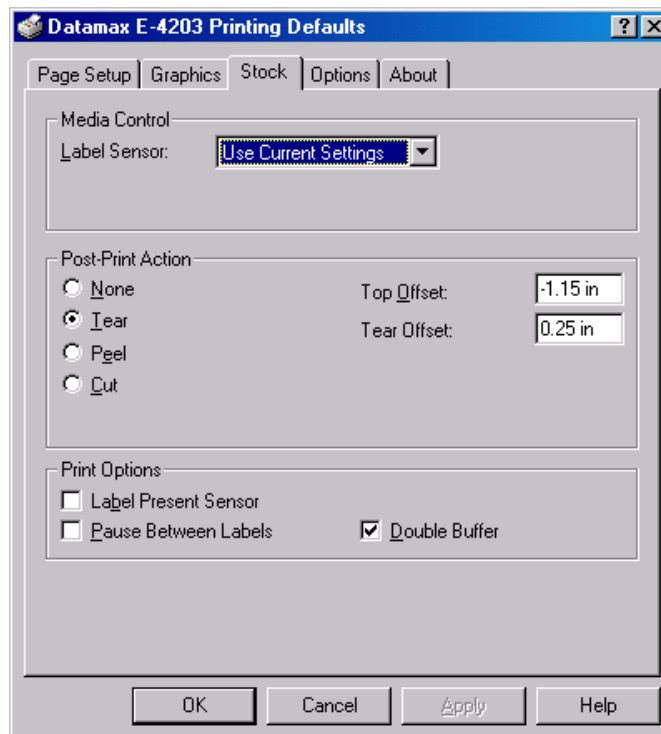
Select the **Advanced** tab.



Next, select **Printing Defaults** at the lower left of the screen.



Under **Edit**, change the **Stock** size to 2 x 5.50 inches as shown above. Click **apply** and Select the **Stock** tab.



On the **Stock** tab for the **E-4203** driver make the settings match those in the screen above. Select **OK**. Next Choose the **General** tab and at bottom of the screen select **Printing Preferences**. You will see the same tabs appear as the screens above. Go to both the **Page Setup** and **Stock** tabs. Verify or change the settings so that they coincide with the settings above.

Section D – Fast Ticket for any Datamax model (local printer only)

Using the Folio Fast Ticket option allows tickets to be printed 2-3 times faster than with the Windows print driver. It does not use the standard Windows print driver for Datamax printers. Instead it can be interfaced in one of two ways. Either by entering the port directly or by using the Pitney Bowes Pass Thru driver. The only limitation at this time is that the printer needs to be connected to and accessed by a single workstation. Fast ticket works quicker because it sends only a text string to the printer and uses the fonts which are built into the printers memory.

DIRECT PORT ACCESS

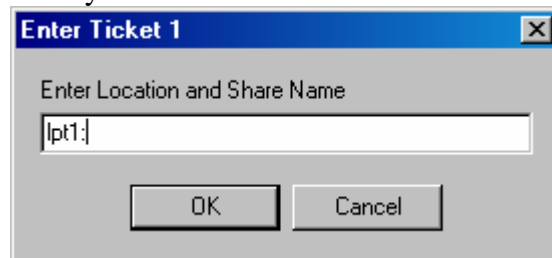
If the printer is physically connected to the workstation via either a parallel or serial port this is the simplest way to connect. This method cannot be used with USB interface.

One

In Folio go to “Preferences” and “Printer Defaults”.
Select “Fast Ticket”. Close the preferences screen.

Two

Under “Utility” select “Enter Ticket 1”



This allows you to simply type in the printer port that the tickets are being directed to. Either a serial or parallel port to which the printer is connected.

PASS THRU DRIVER

The Pass Thru driver allows you to direct output to the printer through any supported port. It does require this print driver, however the printer is still printing with its built in fonts.

One

Use **Add Printer Wizard**. This can be found in either the **Control Panel** or **Printers and Faxes**. Follow the prompts on the screen. Set this printer up as a local printer.

Two

Select the appropriate printer port for your connection. Both printers have parallel and serial ports. The **E-4203** printer also has a built in **USB** port. You can still connect the **ST-3210** to a **USB** port if you purchase a **USB to Parallel** cable. Cost is less than \$25 and is available from “*Cables to Go*” or your local computer supplier.

Three

Continue the driver installation process for Pitney Bowes Pass Thru Driver. Do not print a test page for this print driver. A test page will not print.

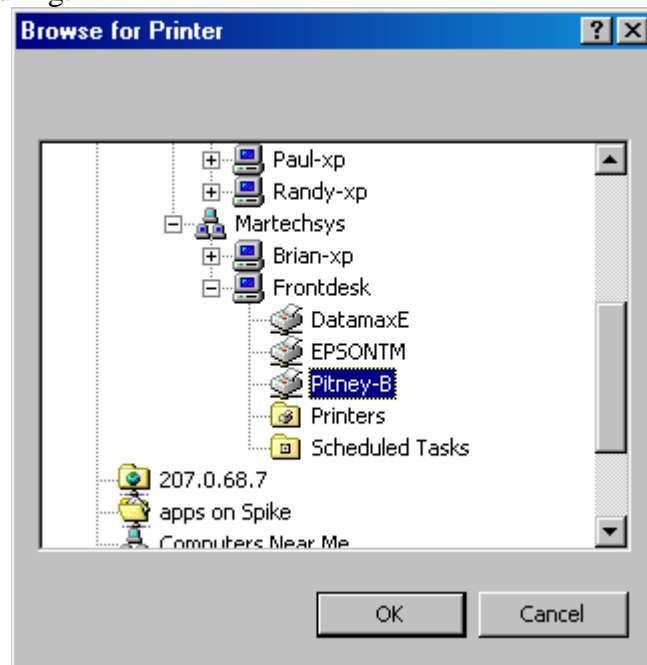
The Pass Thru driver can be found on either the Datamax Accessories CD which came with the printer or in your “Prn_Drv” folder under C:\Program Files\Folio Box Office

Four

Next, to use the driver, in Folio go to “Preferences” and “Printer Defaults”. Select “Fast Ticket”. Close the preferences screen.

Five

Under “Utility” select “Select Ticket 1” or whichever printer number you are configuring.



Find the printer on the list and select it.