

## Restructuring Corrupted Data files with Datafix

A utility program has been included with the Folio Box Office software program that will assist you in restructuring data files or fixing data files that may have become corrupted. Errors that may occur and require the use of this utility include “*index is out of date*”, “*corrupt table other than header*”, “or “*a component name \_\_\_\_\_ already exists*”.

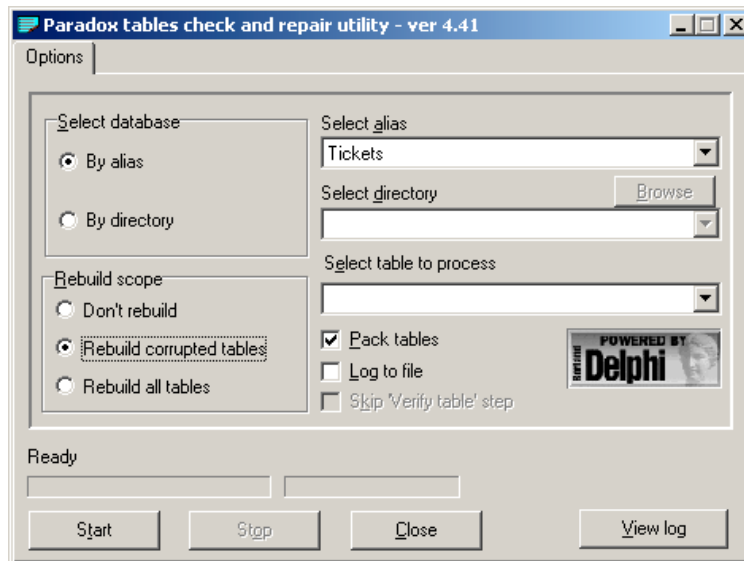
The program is called **Datafix** identified as “**Pdxrblld.exe**”. It is located in your program folder (usual path is *C:\Program Files\Folio Box Office Management*).

**Note: Before starting this utility, make sure the Folio Box Office program is closed on your computer. If your system is networked, make sure all computers on the network have closed the Folio Box Office program. This utility can be run from any computer on the network.**

1. The program can be accessed two ways:
  - a. Go to **Start|Programs|Folio Box Office Management|Pdxrblld**.

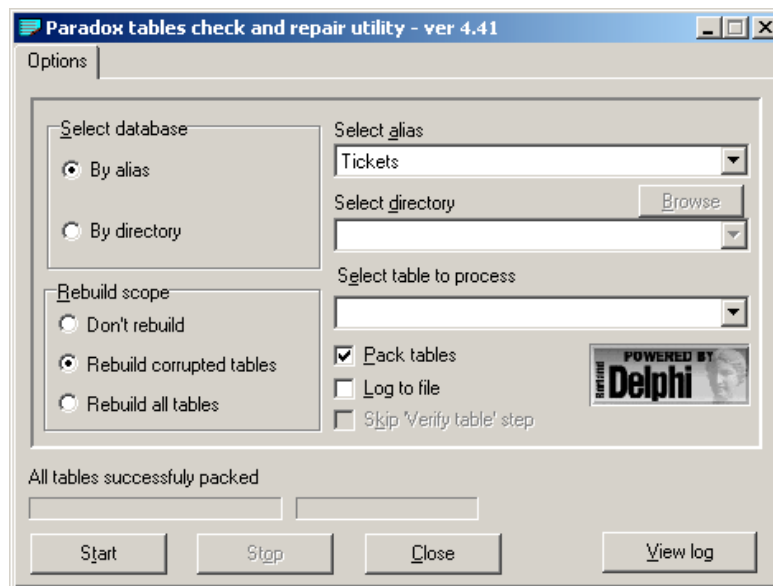
**-OR-**

  - b. Open Windows Explorer. Go C:\Program Files\Folio Box Office Management. In this folder, double-click on the file **Pdxrblld.exe**. If the extension is hidden, it will be identified as an application file.
2. The program opens as **Paradox tables check and repair utility, ver 4.41**.
3. Select the parameters as shown on the following screen-print.



- a. Select Database – Choose ***By alias***. This will choose the selected database that is in your BDE Data path for Folio Box Office.
- b. Select alias – Enter ***Tickets***.
- c. Rebuild scope – Select ***Rebuild corrupted tables***.
- d. Check ***Pack tables***.
- e. Click on the ***Start key***.

The utility will run through your files showing its progress on the screen and find any applicable errors. If errors are found, it will display a message and correct the errors.



- f. When the process is complete, click ***Close***.
4. Open the Folio Box Office program to check if the problem has been resolved.
  5. If the data file problem continues to re-occur, call the Technical Support desk at Martech Systems, Inc. for further assistance.